

ALEXANDER
KRIVOSHEIW

RAPID

WELDED AND PAINTED ALUMINUM
44"X33"X17"



MATYAS

FABRICATED BRONZE AND MARBLE
18"X13"X13"

This fabricated bronze sculpture was built for Alexander's friend Matyas, who suffered a traumatic accident leaving his neuro and motor skills temporarily paralyzed. "Matyas" is inspired by Egyptian and African art, a dedication to physical aesthetics and heroic accomplishments.



MARINA DE GLACE

FABRICATED BRONZE
80"X35"X32"

"Marina de Glacé" is a privately commissioned art piece for an accomplished figure skater, whose passion for the ice was the inspiration behind the sculpture. "Marina de Glacé", translated as "Marina on Ice", is the fluid combination of aerial shapes and the translucent colors of the sea.



GARCIA'S DOORS

FABRICATED BRONZE AND PAINTED GLASS
102"X87"X13"

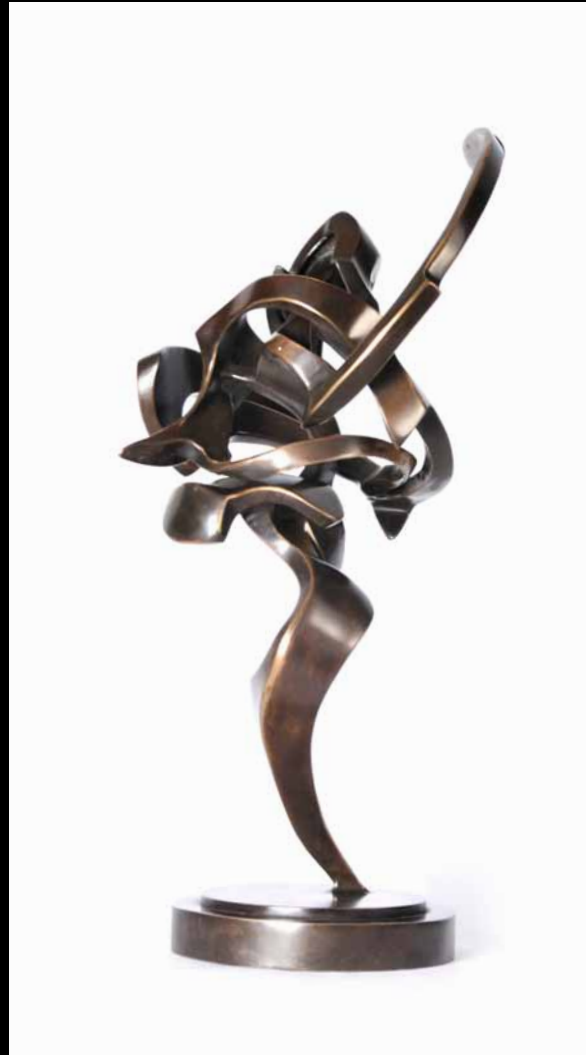
"Garcia's Doors" was designed and commissioned for Albert Garcia's residence on New York City's Upper West Side. The doors are fabricated out of 3/32 evendour silicon bronze. There are 12 painted glass panels inserted inside the door. Each door weighs close to 350 lbs, while the archway itself comes close to 300 lbs, totaling the whole project to weigh around 1,100 lbs. Each scale was hand cut to varying sizes.



MARINA

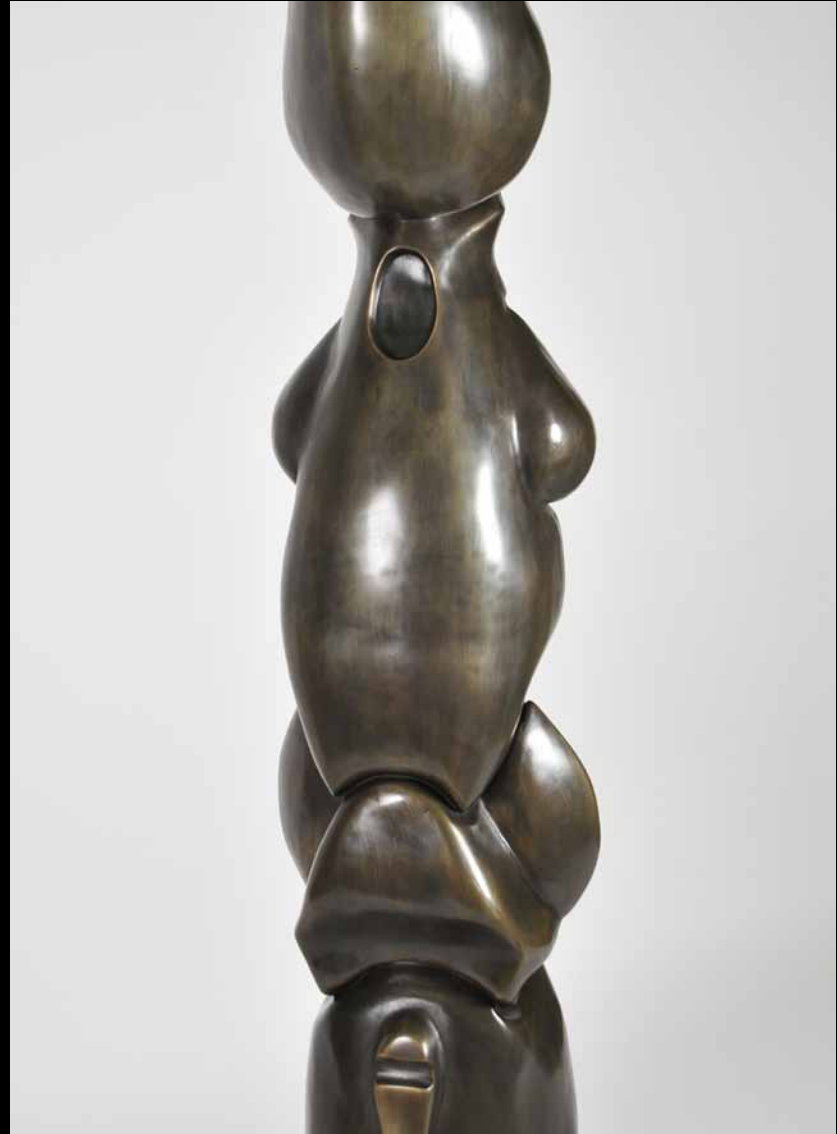
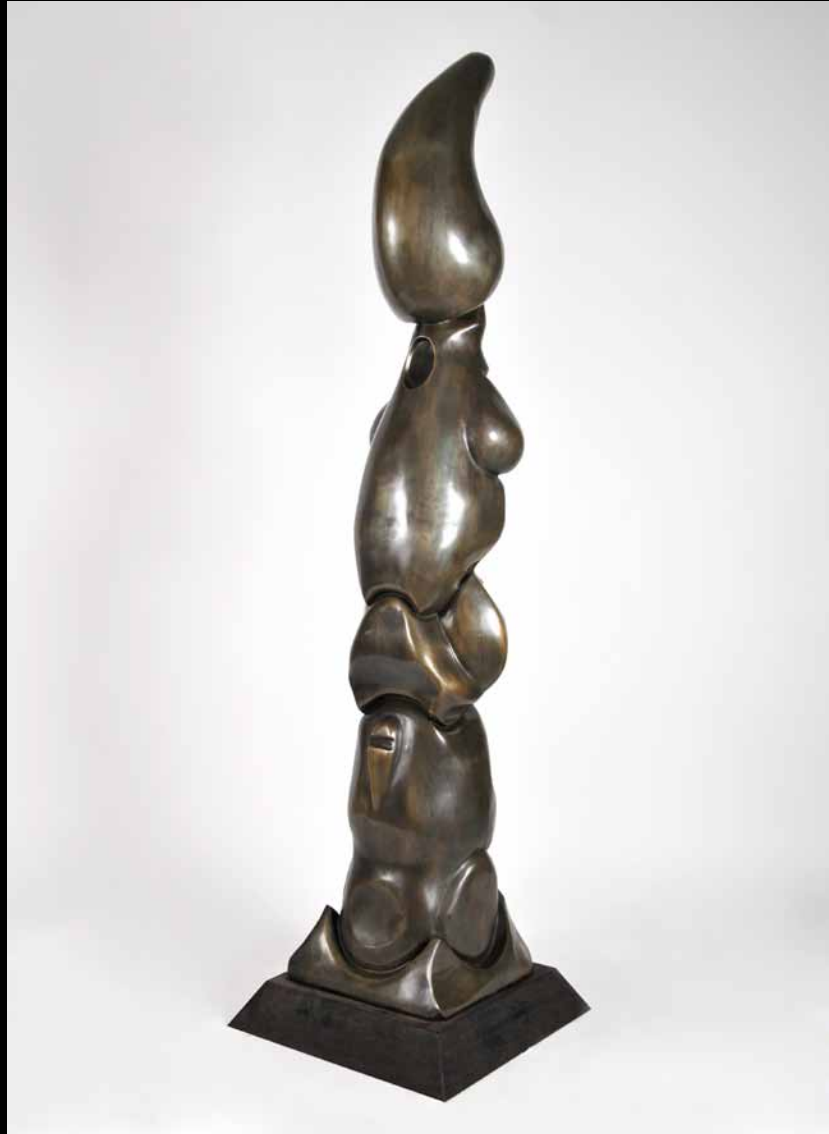
FABRICATED BRONZE
21"X11"X11"

This fabricated bronze sculpture was built for a private collector in New York City, who specifically requested an abstract piece representing a female ice skater in motion.



PRIMAL

CASTED BRONZE
81"X14"X14"



MOVIMENTO

FABRICATED BRONZE
13"X13"X6"

This fabricated bronze sculpture was built for a private collector in New York City, who specifically requested an abstract piece representing a female ice skater in motion.



ST JOHN

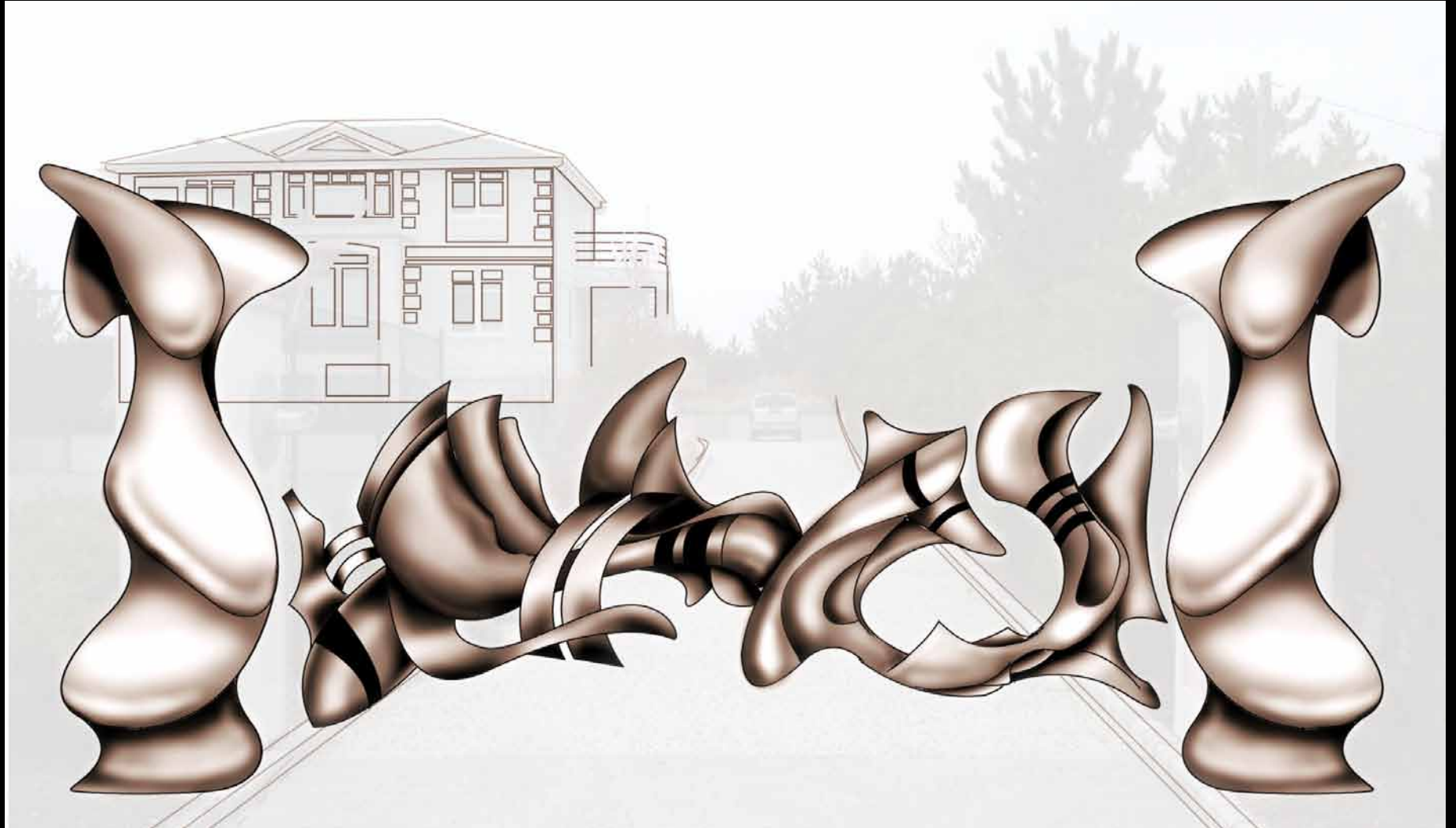
FABRICATED BRONZE
19"X16"X10"

Originally built as a piece of appreciation for a sailor in the US Virgin Islands of St. John. The geometric shapes are representative of the charter boat sails, while the depth of patina is made to mimic the ocean foam.



WEST'S RESIDENTS

CONCEPT BRONZE GATES



DJ HEADPHONES

CONCEPT DESIGN



ALEXION

INTERACTIVE FURNITURE DESIGN

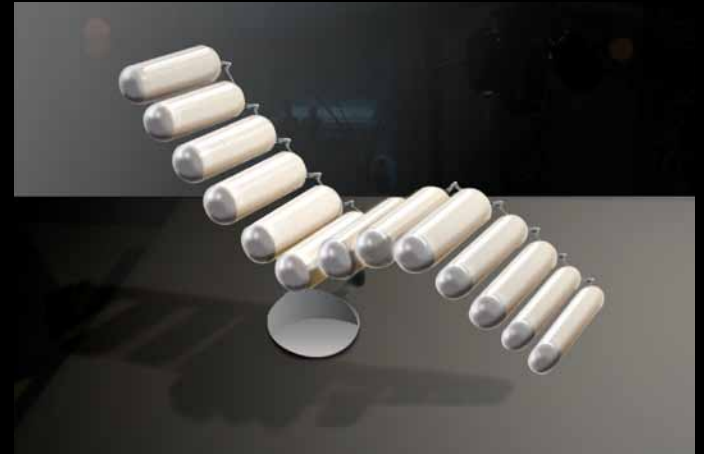
POSTURE BUTTERFLY CUP CHAIR
Versatile posture chair



BUTTERFLY CUBICLE
Two-way mirrored walls



ANTI-GRAVITY CHAIR
Liquid gel, memory foam, magnetic levitation



TIES OF INTEGRITY

KINETIC LIGHT SCULPTURE

"Ties of Integrity" is a large scale kinetic sculpture that simulates a spiral rotating tube of fire. The illusion of fire is created by multiple chiffon flags spinning around a mechanical spine. The spine can be manipulated and fabricated into many different types of shapes and knots.



Born on December 28, 1976 in New York, Alexander graduated from the School of Visual Art with a Bachelor's degree and Honors in Fine Arts Sculpture. Previous to his enrollment in SVA he studied ancient Greek mythology, archaeology and social anthropology for two years in Crete, Greece. These studies have had an influence in his work involving concept design and sculptures.

While enrolled at SVA, Alexander began his apprenticeship with a respected sculptor Kevin Barrett, learning and developing his welding and fabrication skills over the course of 7 years. Some of the notable work Alexander has fabricated were aluminum wall reliefs for the painter Tom Wesselmann, which have since become one-of-a-kind museum pieces. Working with another respectable sculptor Bill Barrett gave Alexander the opportunity to develop the skill for fabricating large-scale sculptures (up to 18ft), many of which are now in private collections worldwide.

Drawing inspiration from such fields as industrial design, ancient cultures, and modern design aesthetics, Alexander delicately creates a new structural language in his work. He constantly challenges himself with discovering and working with new mediums and materials, creating a new form of expressive forms. Undertones of angelic shapes and movement can be seen in much of Alexander's work. Creating dynamic shapes and giving life to a difficult fixed material such as metal is an exciting and challenging process. Alexander's latest techniques in painted and welded aluminum have become a catalyst for a new direction, possibilities and creative freedom.

Alexander currently lives in New York City with his wife, an Art Director and a Photographer, focusing on private sculpture commissions and personal body of work.

e: alexanderssculptures@gmail.com | c: 917.541.0692 | w: 718.596.3266

A handwritten signature in white ink, reading "Alexander Spindler". The signature is fluid and cursive, with a prominent flourish at the end of the name.